

# THE WOMEN'S SHOW



07 · 03 · 18 — 07 · 04 · 18

VIVIEN ANDERSON GALLERY

GROUND FLOOR 284-290 ST KILDA ROAD ST KILDA VICTORIA 3182 AUSTRALIA

TELEPHONE +613 8598 9657

INFO@VIVIENANDERSONGALLERY.COM



1.

EMILY KAME KNGWARREYE  
 MY COUNTRY (THE LAST SERIES) 1996  
 SYNTHETIC POLYMER PAINT ON CANVAS  
 58.0 X 87.5 CM

## PROVENANCE:

DACOU ARTS, ADELAIDE  
 PRIVATE COLLECTION SYDNEY

## EXHIBITION HISTORY:

UTOPIA: THE GENIUS OF EMILY KAME KNGWARREYE, NATIONAL MUSEUM OF ART, OSAKA ON 26 FEBRUARY 2008  
 NATIONAL ART CENTRE, TOKYO ON 28 MAY 2008  
 NATIONAL MUSEUM OF AUSTRALIA IN CANBERRA, 22 AUGUST - 12 OCTOBER 2008.

## ILLUSTRATED:

UTOPIA: THE GENIUS OF EMILY KAME KNGWARREYE PP 202,203

PAINTED OUTSIDE THE UTOPIA SHOP ON 16, 17 AND 18 AUGUST 1996, TWO WEEKS BEFORE SHE DIED. USING 4 AND 6 INCH PAINT BRUSHES IN BROAD GESTURAL SLABS OF MOSTLY HIGH KEY COLOURS, THESE WORKS ARE HER FINAL STYLISTIC INNOVATION. MARGO NEALE, AUTHOR AND CURATOR, UTOPIA: THE GENIUS OF EMILY KAME KNGWARREYE



2.

SPINIFEX WOMEN'S COLLABORATIVE

TJARUWA WOODS, MYRTLE PENNINGTON, KANTA DONNEGAN, NGALPINGKA SIMMS AND LORRAINE DAVIES)

KUNGKARANGKALPA 2018

SYNTHETIC POLYMER PAINT ON CANVAS

200 X 230 CM

PROVENANCE: SPINIFEX ARTS PROJECT, WA CAT. 18-4

VIVIENANDERSONGALLERY.COM



3.

NGALPINGKA SIMMS

SEVEN SISTERS AT WAYIYUL 2018

SYNTHETIC POLYMER PAINT ON CANVAS

200 X 137 CM

PROVENANCE: SPINIFEX ARTS PROJECT, WA CAT. 18-2

VIVIENANDERSONGALLERY.COM



---

4.

---

NYRAPAYI GILES

---

WARMURRUNGU 2017

---

SYNTHETIC POLYMER PAINT ON CANVAS

---

179 X 148 CM

---

PROVENANCE: TJARLIRLI ART, WA CAT. 17-4967

---

VIVIENANDERSONGALLERY.COM

---



5.

KATJARRA BUTLER

*NGAMURRU/KATJARRA 2017*

SYNTHETIC POLYMER PAINT ON CANVAS

179 X 148 CM

PROVENANCE: TJARLIRLI ART, WA CAT. 17-1001

VIVIENANDERSONGALLERY.COM



6.

DENISE BRADY

*LASSETER'S CAVE – TJUNTI 2017*

SYNTHETIC POLYMER PAINT ON CANVAS

147 X 122 CM

PROVENANCE: TJARLIRLI ART, WA CAT. 17-1005KA

VIVIENANDERSONGALLERY.COM



7.

VALMAYI NAMPITJINPA

*KARRKURINJA 2017*

SYNTHETIC POLYMER PAINT ON CANVAS

102 X 76 CM

PROVENANCE: TJARLIRLI ART, WA CAT. 17-847KA

VIVIENANDERSONGALLERY.COM



8.

ANGKALIYA & HELEN CURTIS

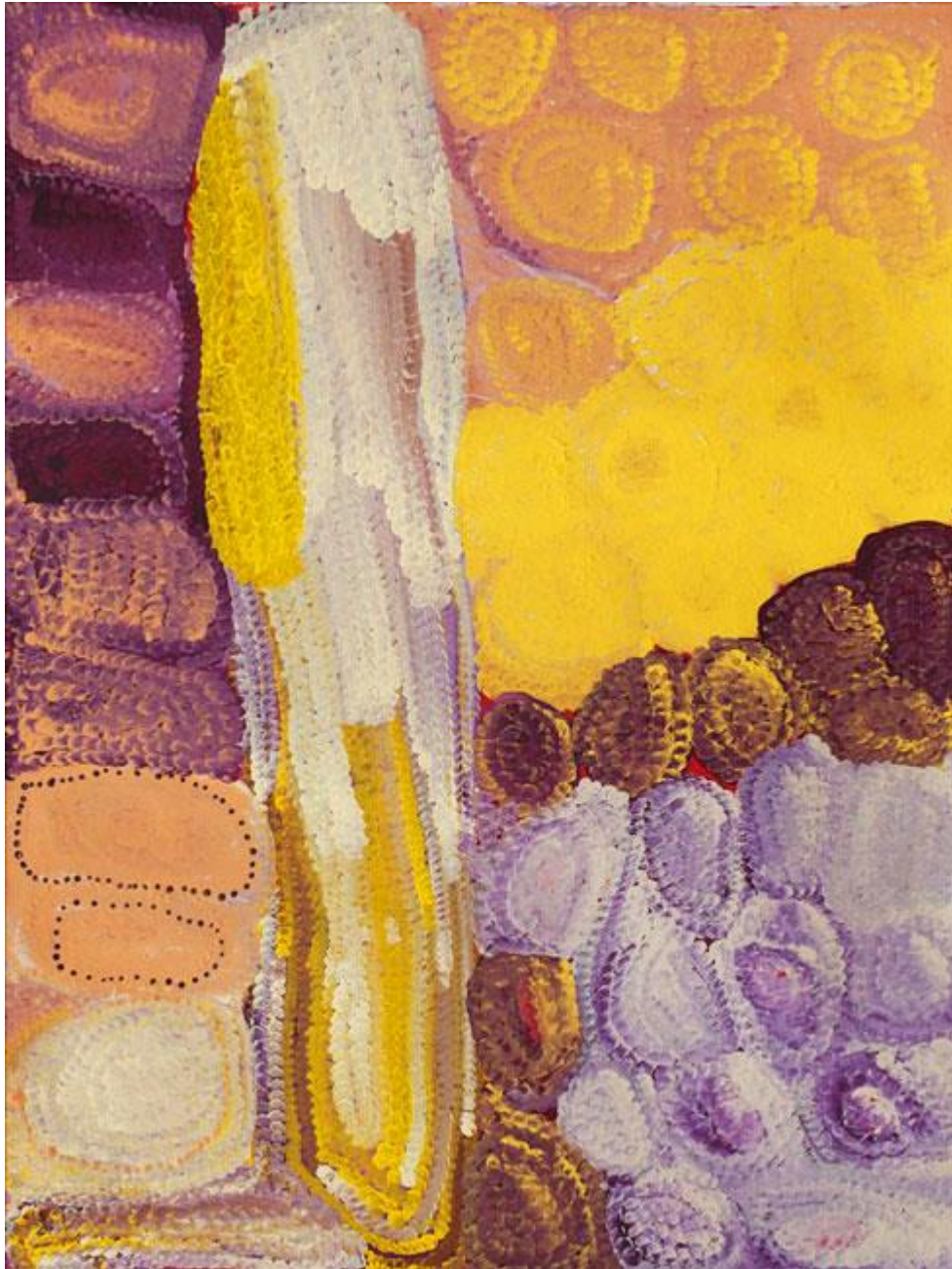
CAVE HILL 2018

SYNTHETIC POLYMER PAINT ON CANVAS

166 X 200 CM

PROVENANCE: TJUNGU PALYA, SA CAT. 18-008

VIVIENANDERSONGALLERY.COM



9.

BUGAI WHYOULTER

KANAWARRITJI 2017

SYNTHETIC POLYMER PAINT ON CANVAS

122 X 91 CM

PROVENANCE: MARTUMILI, WA CAT. 17-500

VIVIENANDERSONGALLERY.COM



---

10.

---

NGAMARU BIDU

---

WANTILI 2017

---

SYNTHETIC POLYMER PAINT ON CANVAS

---

122 X 91 CM

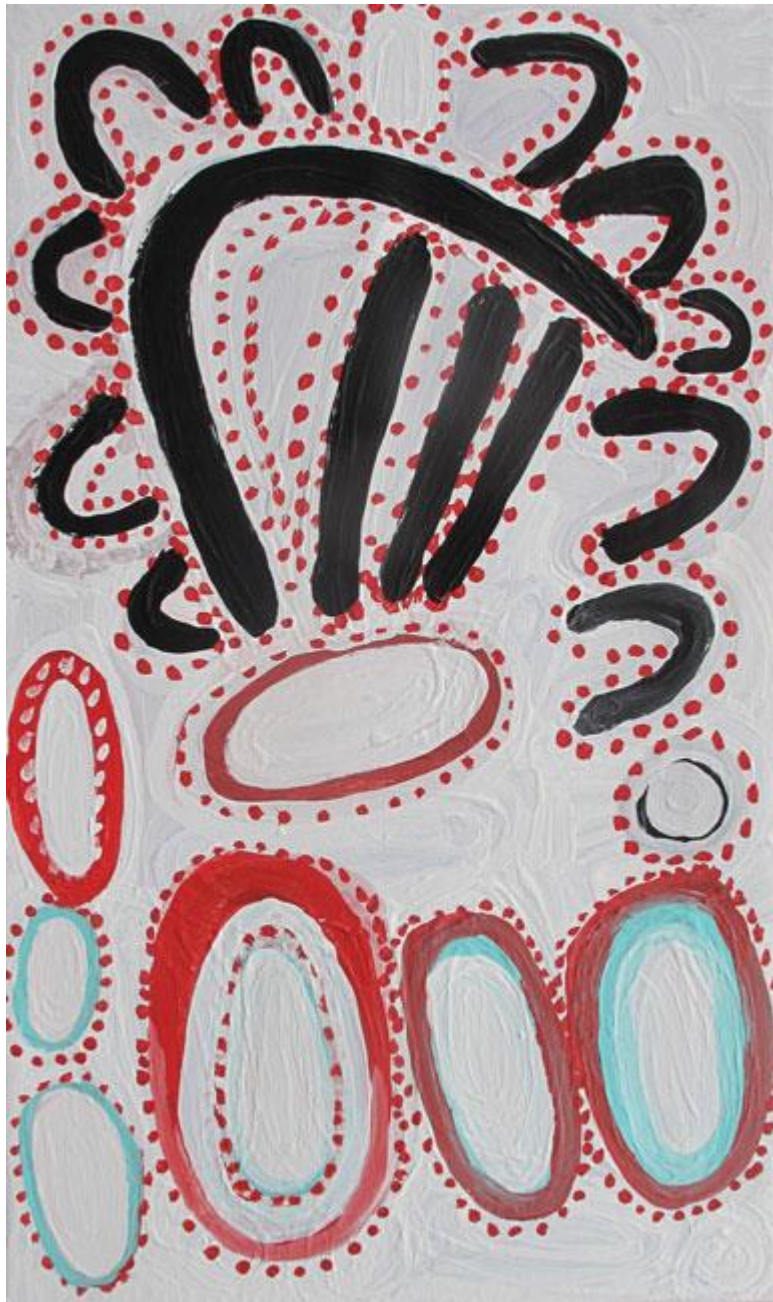
---

PROVENANCE: MARTUMILI, WA CAT. 17-948

---

VIVIENANDERSONGALLERY.COM

---



11.

LILY HARGRAVES NUNGARRAYI

WOMEN'S DREAMING 2013

SYNTHETIC POLYMER PAINT ON CANVAS

85 X 50 CM

PROVENANCE: WARNAYAKA ART, NT CAT. 797-13

VIVIENANDERSONGALLERY.COM



12.

LILY HARGRAVES NUNGARRAYI

*BUSH POTATO DREAMING* 2011

SYNTHETIC POLYMER PAINT ON CANVAS

85 X 50 CM

PROVENANCE: WARNAYAKA ART, NT CAT. 526-11

VIVIENANDERSONGALLERY.COM



13.

ROSIE TASMAN NAPURRURLA

*MURNKU MARNKU* 2016

SYNTHETIC POLYMER PAINT ON CANVAS

85 X 50 CM

PROVENANCE: WARNAYAKA ART, NT CAT. 72-16

VIVIENANDERSONGALLERY.COM



---

14.

SONIA KURARRA

MARTUWARRA 2018

SYNTHETIC POLYMER PAINT ON CANVAS

120 X 180 CM

PROVENANCE: MANGKAJA ARTS, WA CAT. 3/18

---

VIVIENANDERSONGALLERY.COM



---

15.

---

MAY MOODOONUTHI

---

*BURRKUNDA 2007*

---

SYNTHETIC POLYMER PAINT ON LINEN

---

198 X 102 CM

---

PROVENANCE: MORNINGTON ISLAND ARTS, QLD CAT. # 2124-L-MM-0307

---

VIVIENANDERSONGALLERY.COM

---



---

16.

---

REGINA PILAWUK WILSON

---

SYAW (*FISH-NET*) 2018

---

SYNTHETIC POLYMER PAINT ON LINEN

---

150 X 150 CM

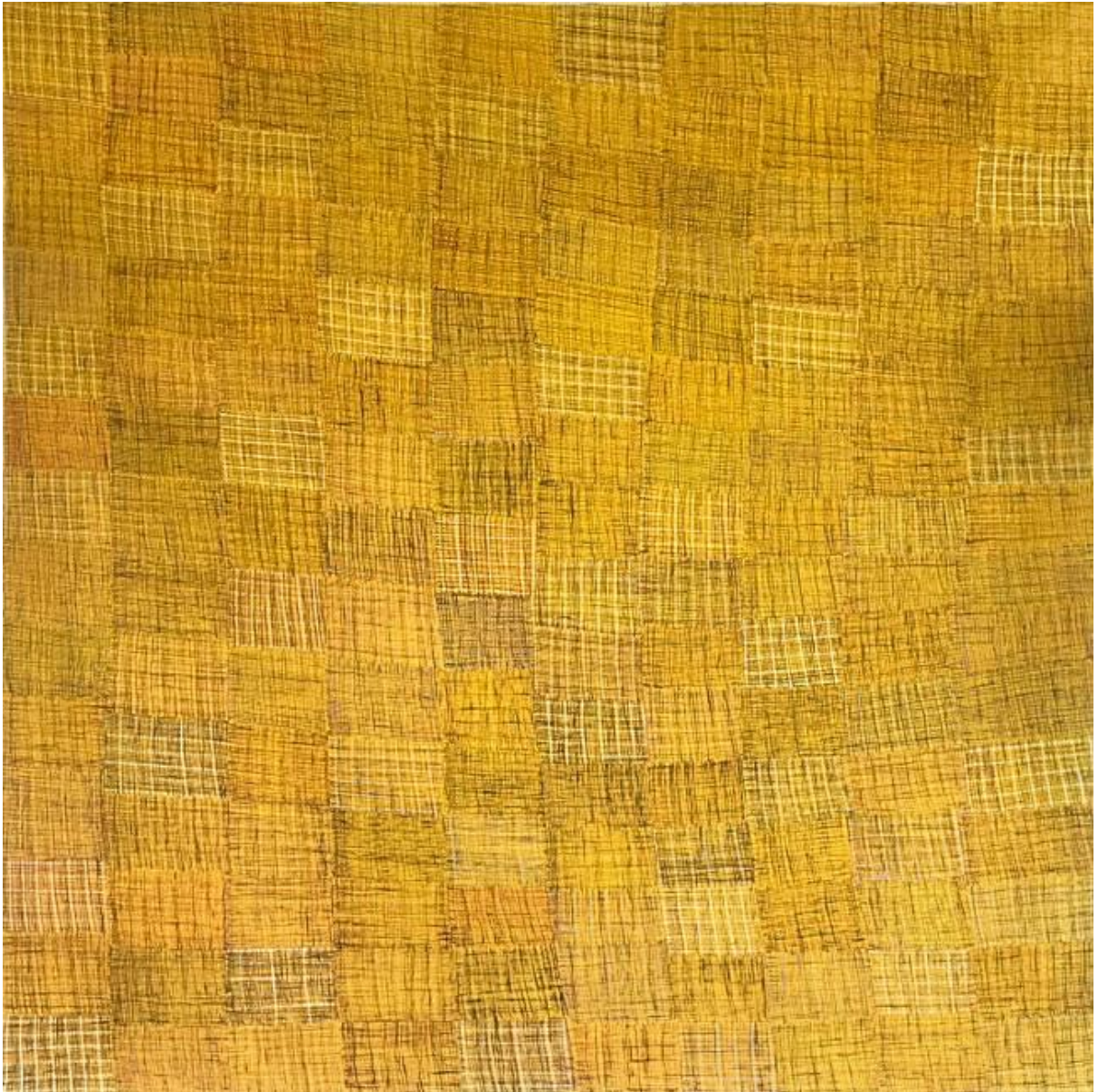
---

PROVENANCE: DURRMU ARTS, NT CAT. 11-18

---

VIVIENANDERSONGALLERY.COM

---



17.

REGINA PILAWUK WILSON

SYAW (*FISH-NET*) 2018

SYNTHETIC POLYMER PAINT ON LINEN

150 X 150 CM

PROVENANCE: DURRMU ARTS, NT CAT. 12-18

VIVIENANDERSONGALLERY.COM



18.

HAYLEY MILLAR-BAKER

UNTITLED 1 (FLORA & FAUNA) 2016

INKJET ON COTTON RAG

77 X 111 CM

EDITION OF 2 (+1 AP)

VIVIENANDERSONGALLERY.COM



19.

HAYLEY MILLAR-BAKER

UNTITLED 2 (FLORA & FAUNA) 2016

INKJET ON COTTON RAG

77 X 111 CM

EDITION OF 2 (+1 AP)

VIVIENANDERSONGALLERY.COM



20.

HAYLEY MILLAR-BAKER

UNTITLED 3 (FLORA & FAUNA) 2016

INKJET ON COTTON RAG

77 X 111 CM

EDITION OF 2 (+1 AP)

VIVIENANDERSONGALLERY.COM



21.

GRACE LILLIAN LEE  
*BODY SCULPTURE* 2016  
COTTON BRAID, BEADING  
90 X 65 X 50 CM



---

22. 23. 24.

MAREE CLARKE

*RIVER REED NECKLACE WITH FEATHERS 2017*

PLAIN AND DYED RIVER REED, PARROT, COCKATOO AND GALAH FEATHERS, TWINE

3000 CM (LENGTH)

---

---

---

---

---

---

---

---



25.

DJIRRIRRA WUNUNGURRA

YUKUWA LARRAKITJ 2017

EARTH PIGMENT ON HOLLOW LOG

163 X 63 X 16 CM

PROVENANCE: BUKU LARNNGGAY MULKA, NT CAT. 4362-17

VIVIENANDERSONGALLERY.COM



---

26.

---

DJIRRIRRA WUNUNGMURRA

---

YUKUWA LARRAKITJ 2017

---

EARTH PIGMENT ON HOLLOW LOG

---

216 CM (HEIGHT)

---

PROVENANCE: BUKU LARNNGGAY MULKA, NT CAT. 5074-17

---

VIVIENANDERSONGALLERY.COM

---



---

27.

---

DJIRRIRRA WUNUNGMURRA

---

YUKUWA LARRAKITJ 2017

---

EARTH PIGMENT ON HOLLOW LOG

---

241 CM (HEIGHT)

---

PROVENANCE: BUKU LARNNGGAY MULKA, NT CAT. 5648-17

---

VIVIENANDERSONGALLERY.COM

---



28.

---

DJIRRIRRA WUNUNG MURRA

YUKUWA LARRAKITJ 2017

EARTH PIGMENT ON HOLLOW LOG

207 CM (HEIGHT)

PROVENANCE: BUKU LARNNGGAY MULKA, NT CAT. 5830-17

---

VIVIENANDERSONGALLERY.COM

---



29.

---

DJIRRIRRA WUNUNG MURRA

YUKUWA LARRAKITJ 2017

EARTH PIGMENT ON HOLLOW LOG

260 CM (HEIGHT)

PROVENANCE: BUKU LARNNGGAY MULKA, NT CAT. 5979-17

---

VIVIENANDERSONGALLERY.COM

---



---

30.

MALALUBA GUMANA

*DHATAM LARRAKITJ* 2017

EARTH PIGMENT ON HOLLOW LOG

183 X 24 X 24 CM

PROVENANCE: BUKU LARNNGGAY MULKA, NT CAT. 5390-17

---

VIVIENANDERSONGALLERY.COM

---



---

31.

MALALUBA GUMANA

*DHATAM LARRAKITJ 2017*

EARTH PIGMENT ON HOLLOW LOG

173 X 20 X 20 CM

PROVENANCE: BUKU LARNNGGAY MULKA, NT CAT. 5897-17

---

VIVIENANDERSONGALLERY.COM

---



---

32.

MALALUBA GUMANA

*DHATAM LARRAKITJ* 2017

EARTH PIGMENT ON HOLLOW LOG

175 X 30 X 30 CM

PROVENANCE: BUKU LARNNGGAY MULKA, NT CAT. 6023-17

---

VIVIENANDERSONGALLERY.COM

---



---

33.

MALALUBA GUMANA

*DHATAM LARRAKITJ* 2017

EARTH PIGMENT ON HOLLOW LOG

164 X 20 X 20 CM

PROVENANCE: BUKU LARNNGGAY MULKA, NT CAT. 6056-17

---

VIVIENANDERSONGALLERY.COM

---



---

34.

MALALUBA GUMANA

*DHATAM LARRAKITJ* 2017

EARTH PIGMENT ON HOLLOW LOG

164 X 20 X 20 CM

PROVENANCE: BUKU LARNNGGAY MULKA, NT CAT. 6110-17

---

VIVIENANDERSONGALLERY.COM

---



---

35.

JOY GARLBIN

*DJOMI 2017*

EARTH PIGMENT ON CARVED WOOD

82 X 6 X 7 CM

PROVENANCE: MANINGRIDA ARTS & CRAFTS, NT CAT. 718-17

---

VIVIENANDERSONGALLERY.COM

---



---

36.

JOY GARLBIN

*DJOMI 2017*

EARTH PIGMENT ON CARVED WOOD

135 X 6 X 6 CM

PROVENANCE: MANINGRIDA ARTS & CRAFTS, NT CAT. 772-17

---

VIVIENANDERSONGALLERY.COM

---



---

37.

JOY GARLBIN

*DJOMI 2017*

EARTH PIGMENT ON CARVED WOOD

111 X 6 X 6 CM

PROVENANCE: MANINGRIDA ARTS & CRAFTS, NT CAT. 774-17

---

VIVIENANDERSONGALLERY.COM

---



---

38.

JOY GARLBIN

*DJOMI 2017*

EARTH PIGMENT ON CARVED WOOD

102 X 7 X 8 CM

PROVENANCE: MANINGRIDA ARTS & CRAFTS, NT CAT. 773-17

---

VIVIENANDERSONGALLERY.COM

---



---

39.

WINNIE SAMPI

*OYSTER BEACH 2017*

SYNTHETIC POLYMER PAINT ON PAPER

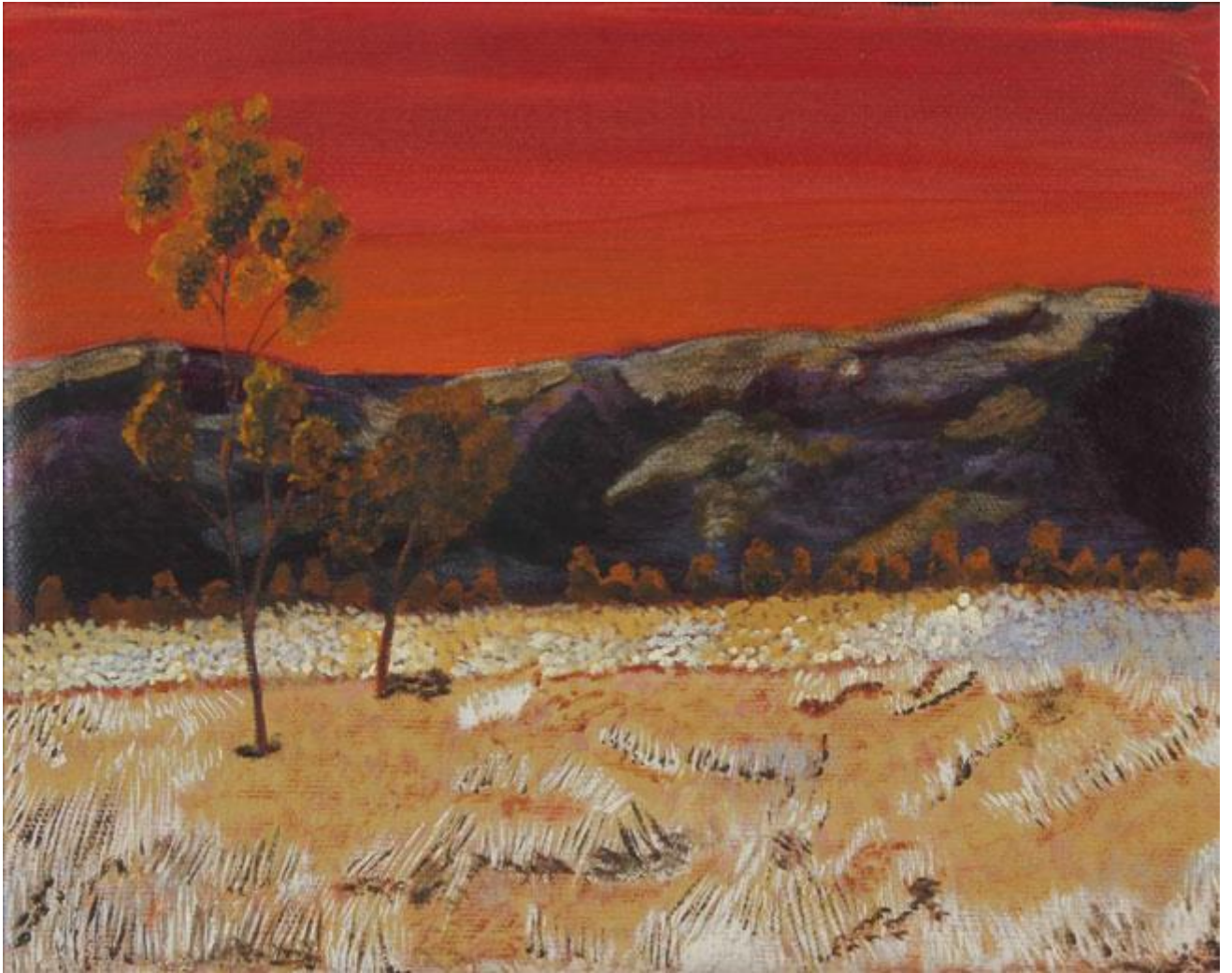
17.5 X 26.5 CM

PROVENANCE: SPINIFEX HILL STUDIO, WA CAT. 17-950

---

VIVIENANDERSONGALLERY.COM

---



---

40.

WINNIE SAMPI

*A SUNSET IN THE PILBARA* 2017

SYNTHETIC POLYMER PAINT ON CANVAS

20.5 X 25 CM

PROVENANCE: SPINIFEX HILL STUDIO, WA CAT. 17-941

---

VIVIENANDERSONGALLERY.COM

---



---

41.

WINNIE SAMPI

*ANT HILL 2017*

SYNTHETIC POLYMER PAINT ON ARCHES PAPER

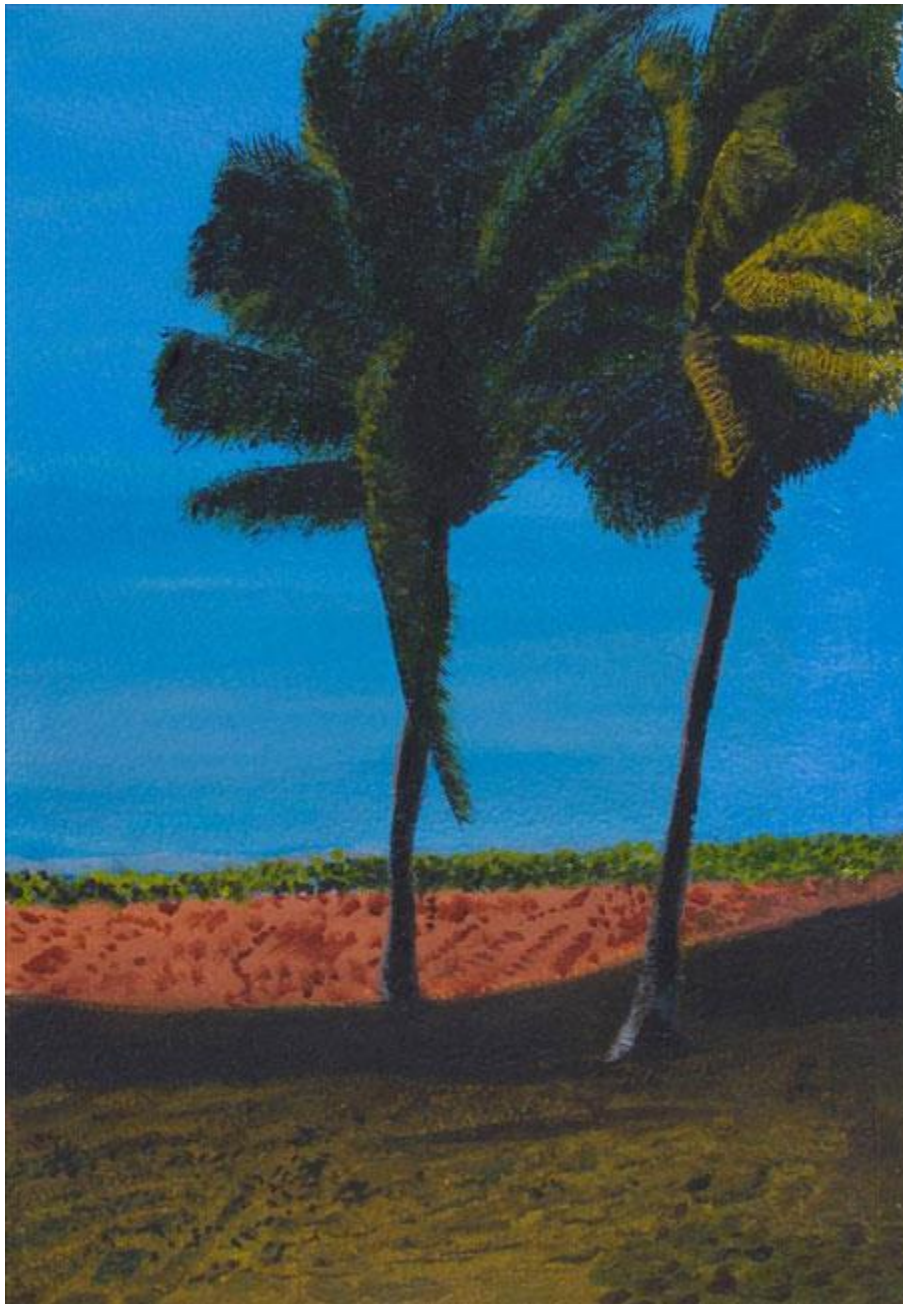
18 X 27 CM

PROVENANCE: SPINIFEX HILL STUDIO, WA CAT. 17-903

---

VIVIENANDERSONGALLERY.COM

---



---

42.

WINNIE SAMPI

*THE SUN IS GOING DOWN 2017*

SYNTHETIC POLYMER PAINT ON PAPER

26 X 17 CM

PROVENANCE: SPINIFEX HILL STUDIO, WA CAT. 17-1322

---

VIVIENANDERSONGALLERY.COM

---



---

43.

WINNIE SAMPI

*BOAT RAMP, PORT HEDLAND AFTER THE SUNSET 2017*

SYNTHETIC POLYMER PAINT ON CANVAS

23 X 30.5 CM

PROVENANCE: SPINIFEX HILL STUDIO, WA CAT. 17-1133

---

VIVIENANDERSONGALLERY.COM

---



44.

WINNIE SAMPI

CORMORANTS 2017

SYNTHETIC POLYMER PAINT ON CANVAS

20.5 X 25 CM

PROVENANCE: SPINIFEX HILL STUDIO, WA CAT. 18-50

VIVIENANDERSONGALLERY.COM



45.

VICKI WEST

BODICE 2018

KELP, WAXED THREAD

30 X 32 X 26 CM



46.

VICKI WEST

*KELP NECKLACE 2018*

KELP STALK AND WAXED THREAD

128 CM (LENGTH)

VIVIENANDERSONGALLERY.COM



47.

VICKI WEST

*KELP NECKLACE 2018*

KELP STALK AND WAXED THREAD

120 CM (LENGTH)



48.

VICKI WEST

NECKLACE 2018

MARINER SHELLS, RYE SHELLS, WAXED THREAD

86 CM (LENGTH)

VIVIENANDERSONGALLERY.COM